

steril panel

Cleanroom Partitions

Address

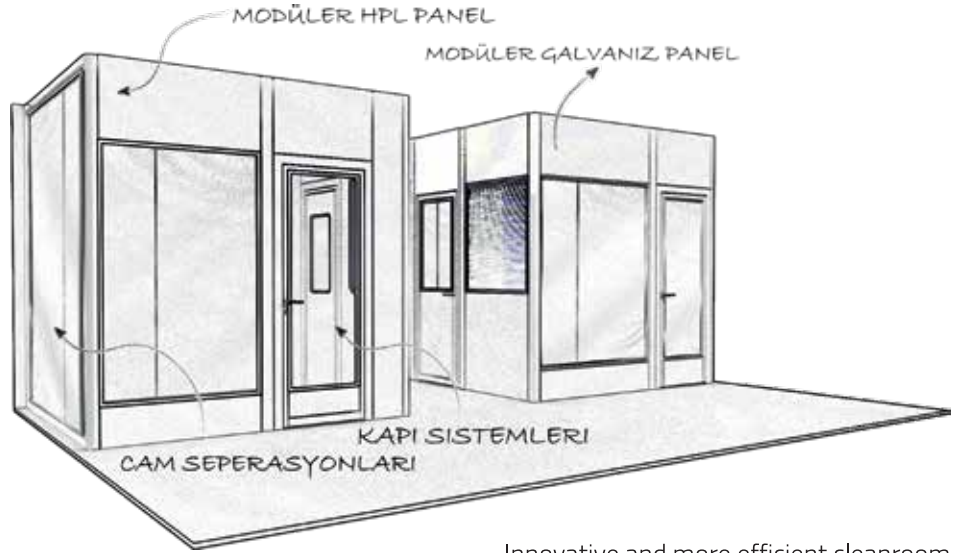
Gençosman Mah.
Topçu Sok. No:6
Güngören
İstanbul / Türkiye

Contact

Tel: +90 212 634 01 01
info@asterilpanel.com

www.asterilpanel.com

WHO WE ARE?



Innovative and more efficient cleanroom partition production than ever before

Founded in 1987 in Istanbul, Akar Aluminum has been serving the construction sector in areas as aluminium joinery systems, glass façade - closed façade systems, office partition systems in residential buildings, shopping malls, hospitals, hotels, offices, schools, universities and many other projects.

Since 2004, Akar Aluminum has entered the sector by producing clean room glass separation systems. Since 2012, it has started to produce clean room partition systems under the brand name of a sterilpanel. Within the scope of this production, modular hpl, stainless, galvanised and aluminium cleanroom panels, walkable ceilings, grid ceilings, cleanroom doors, dynamic - static pass-box and hygiene accessories have been produced in accordance with the norms of GMP and FDA. As Akar Aluminum, we continue our production activities in our factory in Istanbul Gungoren. Within the scope of this production, we provide manufacturing and application with the expert architect and engineer staff primarily after the process of building the project.

steril
panel

WHAT WE DO?

Clean Room Panel Systems:

- Modular hpl panel
- Modular galvanised panel
- Modular glass panel
- Modular stainless panel
- Modular aluminium panel

Clean Room Door Systems:

- Cleanroom swing door systems
- Cleanroom sliding door systems

Clean Room Ceiling Systems:

- Walkable ceiling systems
- Grid ceiling systems

Pass Box Systems:

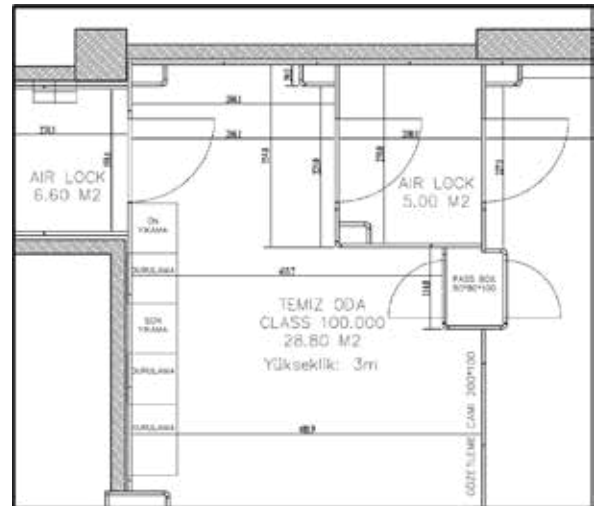
- Dynamic pass box
- Static pass box

Operation Room Panel Systems:

- Hpl panel
- Stainless panel

01

Planing



02

Production



03

Assembly



Remove-Plug Panel Because Modular

A STERILPANEL cleanroom partition panels can be assembled and disassembled and have a modular structure.

What does a modular system mean?

The clean room panels we produce are; produced as a panel for every single module, and practically the module - module combination is made quickly and practically and the separation application is completed. This structure, which results from the combination of each module with other module panels, is called a modular system.

Why modular and advantages?

Each panel, which forms the modules of our cleanroom modular separation system, is easy to assemble thanks to its specifically designed structure. With this feature, revisions can be made easily in an operating production facility or in the construction site. This allows us to remove and install the revised panel or panel area easily and quickly without damaging the surrounding panels, ceiling and other systems.





A STERILPANEL - CLEAN ROOM HPL PANELS

A STERILPANEL clean room panels, which do not create any recesses or protrusions at the joints, can be produced as hpl, glass, galvanised, aluminium or stainless steel panels according to the project needs. Our easy-to-assemble panels are modular. Thanks to its strong structural structure, the air compressive strength is high and it can easily pass the desired volumetric openings in the x, y and z axes.

Advantages of A STERILPANEL cleanroom panels at a glance

- Concealed and strong structural structure
 - High heat and sound insulation with density
 - Modular design
 - Junction combination
 - Surface Variety
 - Easily accessible volumetric openings
 - Mounted - remounted system
 - Aluminium frame structure
-





A STERILPANEL - CLEAN ROOM GALVANIZE PANELS

A STERILPANEL clean room panels, which do not create any recesses or protrusions at the joints, can be produced as hpl, glass, galvanised, aluminium or stainless steel panels according to the project needs. Our easy-to-assemble panels are modular. Thanks to its strong structural structure, the air compressive strength is high and it can easily pass the desired volumetric openings in the x, y and z axes.

Advantages of A STERILPANEL cleanroom panels at a glance

- Concealed and strong structural structure
 - High heat and sound insulation with density
 - Modular design
 - Junction combination
 - Surface Variety
 - Easily accessible volumetric openings
 - Mounted - remounted system
 - Aluminium frame structure
-





A STERiLPANEL - CLEAN ROOM DOORS

Our door systems are designed in accordance with clean room standards; It can be produced as single leaf, double leaf or sliding door. Thanks to its succulent aluminium casing - wing body, strong and durable hinge structure, A STERiLPANEL cleanroom doors continue to serve your production facility without losing the operating comfort for many years. Our doors, which can easily be integrated into different wall thicknesses, are designed to face both the panel and the surface it is installed in. Glass, hpl sheet, galvanised sheet, stainless metal sheet or aluminium metal sheets can be used on the door surfaces. Interlock - airlock access systems can easily work with systems such as card or encrypted access systems.

Advantages of A STERiLPANEL cleanroom doors at a glance

- Strong hinge structure
 - Fledged aluminum case, swing, body
 - Comfortable and long-lasting operation
 - Overboard frame sash joint details
 - Air tight seal under door
 - Modular structure
 - Easy to install
-

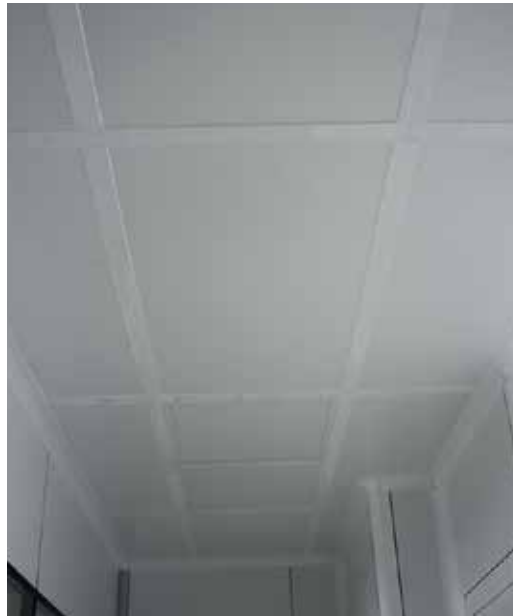
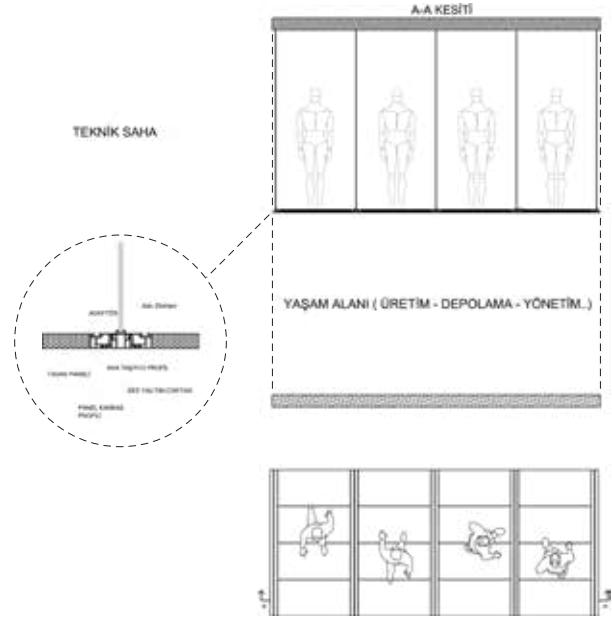


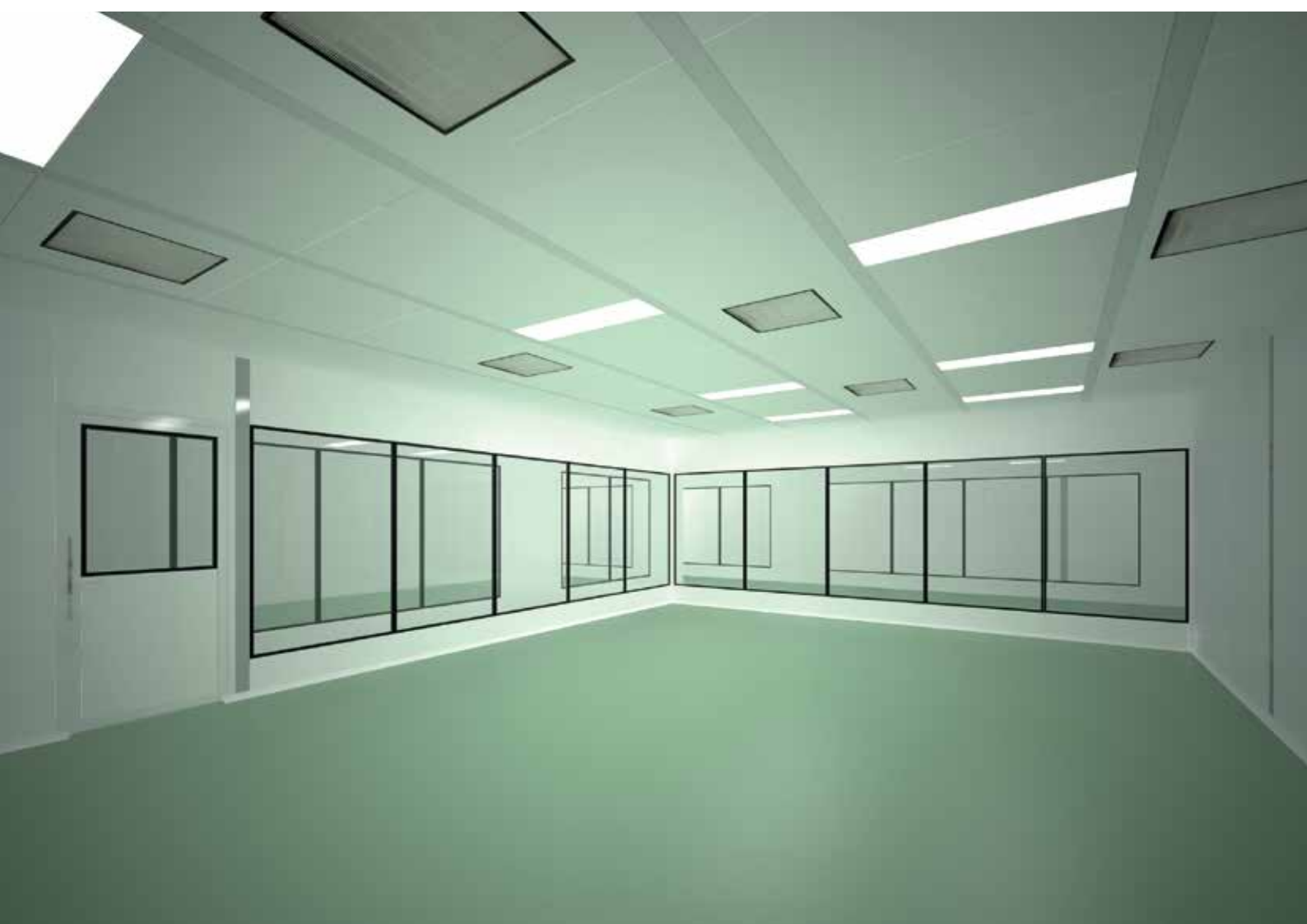
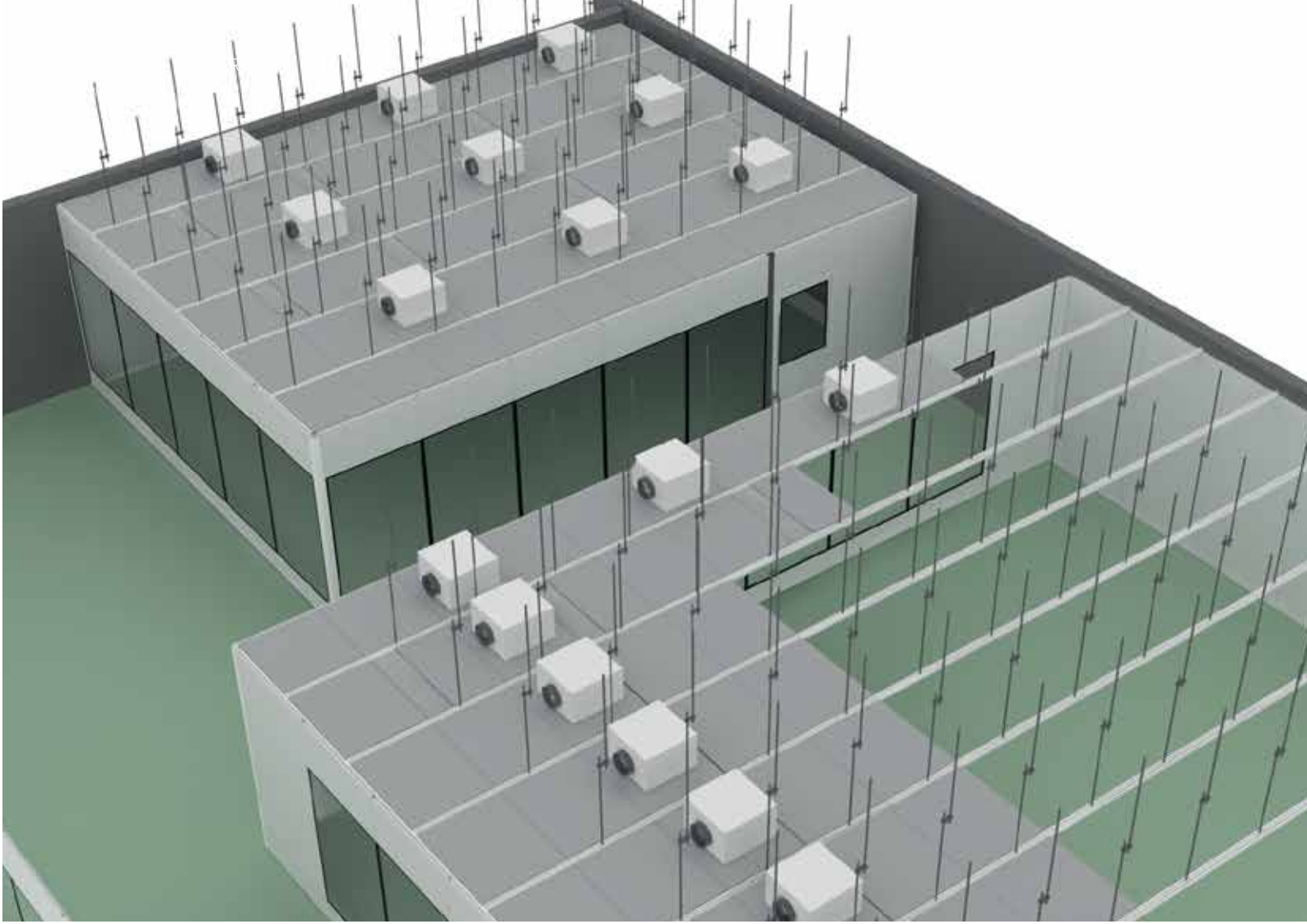


A STERILPANEL - CLEAN ROOM CEILING

A STERILPANEL ceiling systems which are highly tense and have high bearing capacity, thanks to their powerful bearing profile, locking and suspension systems, are manufactured as walkable ceiling and grid ceilings.

In this production, the main bearing profiles can be aluminium, and the filling materials to the ceiling can be hpl, galvanised, stainless or aluminium panel according to the project requirement. Our modular ceiling systems offer easy and quick revision. It can easily work with all other ceiling elements such as armature or hepa filters.







A STERILPANEL - PASS BOXES

A STERILPANEL pass boxes which are designed in accordance with GMP standards are produced as dynamic pass box or static pass box. The pass boxes used for product transition between areas with difference of space are manufactured in stainless steel and the outer part and dimensions are determined and dressed according to the needs of the project. Our Pass box systems are compatible with systems such as air-lock systems, timed hepa filter systems and UV light systems.

Advantages of A STERILPANEL cleanroom passboxes at a glance

- Aluminum frame
 - Stainless steel inner body
 - Chemical resistance
 - Modular system
 - Easy integration with elements of partition
-



A STERILPANEL - INTERLOCK / AIRLOCK

The units, where there are differences in the space in the clean room (doorway), which we define as a kind of electronic communication between the doors, create a control mechanism during the transition from x space to y space under different pressure; It prevents the pressure values of units with pressure differences from being distorted by preventing us from opening and closing the door to the y-space without opening and closing the x door. This ensures that different spaces work better together. Our interlock / airlock lock systems have door traffic lights, emergency exit button, waiting in open or closed position and time adjustment. As AK STERILPANEL, we provide the production of airlock - interlock lock systems that enable communication between two or more doors.

Advantages of A STERILPANEL interlock / airlock at a glance

- Perfect harmony between doors
 - Emergency escape button
 - Programming according to project requirement
 - Easy integration with other systems
 - Easy assembly
 - Easy integration with partition elements
-





A STERIL PANEL - Cleanroom Complementary Accessories

Cleanroom complementary accessories, specially designed for cleanrooms, are manufactured in accordance with the cleanroom and GMP norms. All of the complementary accessories in the cleanroom, which can be easily cleaned in the clean area, turn the air flow in the environment more easily, prevent bacteria and other microorganisms from sheltering, and allow the mechanical + electrical installation to progress by hiding in the room, consists of aluminum profiles and cast aluminum parts. These systems, which are applied to the panel surfaces with a hidden mounting system, without being glued or directly screwed, have very durable and homogeneous combination details. Different color options are available according to the project needs.

Advantages of Cleanroom Complementary Accessories at a Glance

- Fleshy aluminum profile section
 - Resistance to mechanical impact
 - Homogeneous combination
 - Easy to clean and smooth surface
 - Ideal size and form
-



A STERILPANEL - Operating room wall cladding systems

A STERILPANEL, which does not create any indentation or protrusion at the joints, can be produced as hpl, galvanized, aluminum or stainless panels according to the needs of the operating room wall cladding panels. The operating room wall cladding system has a modular structure, which enables us to mount the panel module at the desired point without damaging the floor PVC coating and ceiling panel joint detail. Thanks to its strong structural structure, it has high air pressure resistance and can easily pass the desired volumetric openings in x, y and z axes.

Advantages of A STERILPANEL operating room wall cladding systems at a glance

- Surface variety
 - Modular design
 - Both face combination
 - Secret and strong structural structure
 - Can be mounted without damaging the floor and ceiling
-

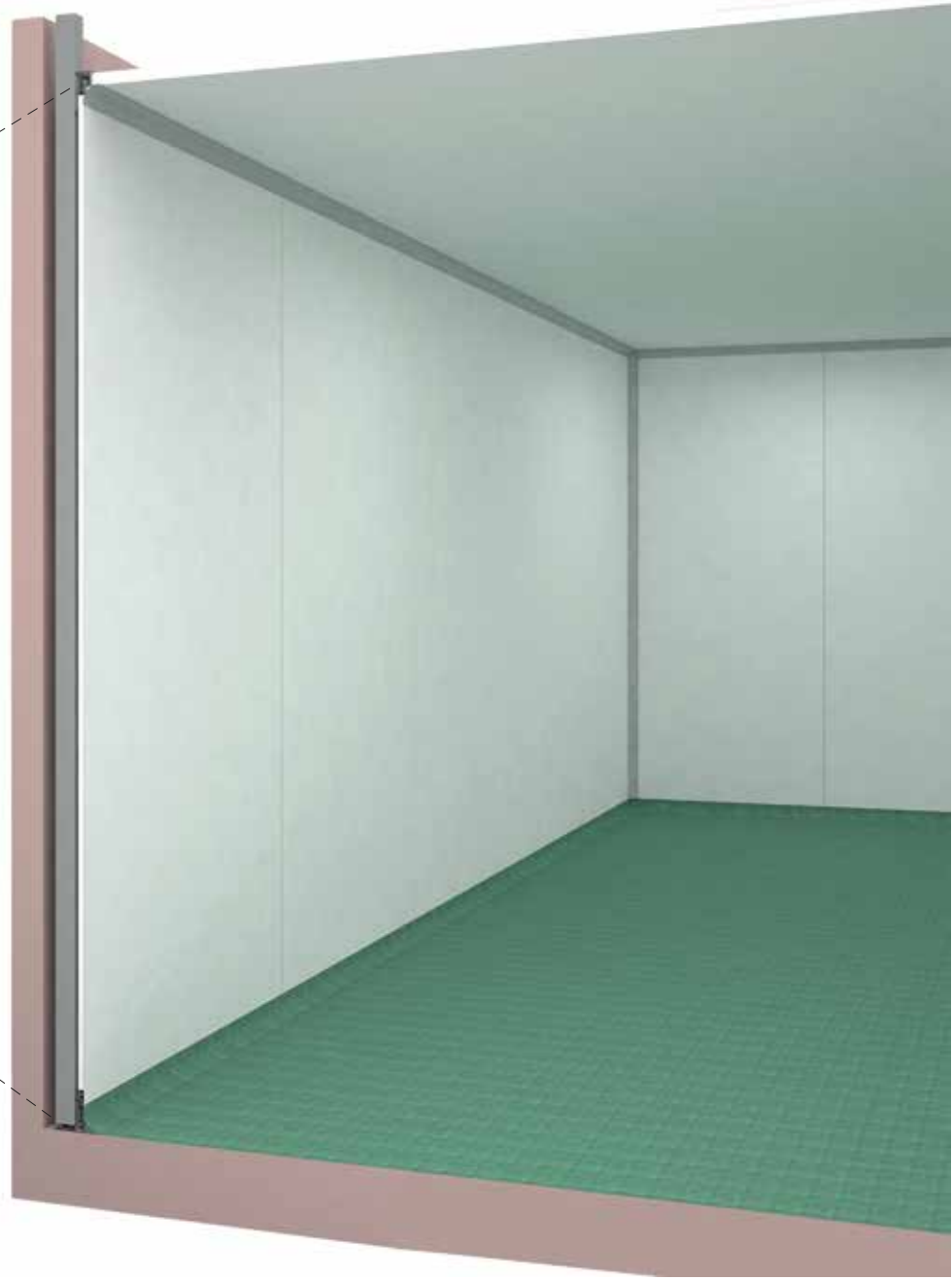
Detay



Tavan Detay



Zemin Detay



“

*Innovative and more efficient cleanroom
partition production than ever before...*



Address

Gençosman Mah. Topçu Sok. No:6
Güngören - İstanbul / Türkiye

Contact

Tel: +90 212 634 01 01
info@asterilpanel.com

www.asterilpanel.com

2020 Catalog